



LANDIS INN CHUHU
Stay & Relax

Hotel Introduction



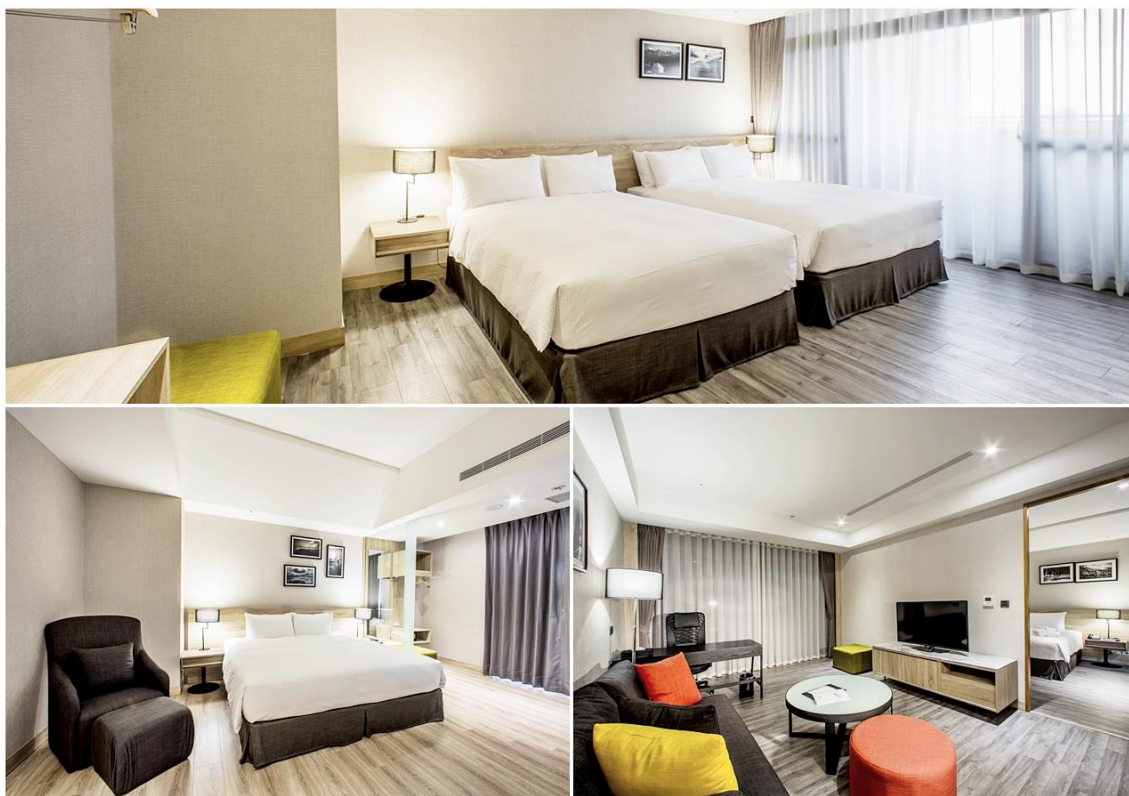
Landis Inn Chuhu is near Hsinchu Science Park, a mere 3-minute ride from Guangfu Road interchange of National Highway No.1. It combines comprehensive planning including hotel functions, business meetings and dining banquets. It is fused with cultural sentiment artistic conception style through the green garden and flowing lights & shadows, creating a modernized comfortable hotel spatial design while endowing it with the concept of natural symbiosis in harmony. There are a total of 173 comfortable guest rooms in the hotel (including 11 suites), starting from Brasserie Liz which supplies meals all day long, Tien Hsiang Lo Liz in Landis which is deeply favored by gourmands with warm dessert aroma and handmade delicacies, the gym and sauna with comprehensive facilities, as well as the Sky Lounge up high which allows the guests to further soak in the greenness and completely relax the body and mind. We sincerely invite foreign and domestic executives to feel the sensation of passing through the green exquisite space, and the accommodation service experience of “Your home away from home”!

Intro to Room Types

Room Types	Number of Rooms
Standard Single	16
Standard Room	11
Standard Twin	60
Superior Room	29
Deluxe Room	24
Deluxe Twin	8
Deluxe Family	8
Family Suite	6
Executive Suite	9
Chuhu Suite	2

Cozy Guest Rooms

All 173 cozy and comfortable double/twin rooms, family rooms and suites feature unique, exquisite and rich artistic decorations, making it the ideal urban paradise with extraordinary taste for business or leisure travelers. The graceful interior decorations with cozy lighting, simple and mellow wooden elements create the elegantly charming and urban modern guest-welcoming atmosphere, allowing people to feel the natural comfort and healing experience as if at home.



Check-in time is 3:00 p.m.; checkout time is 11:00 a.m. Consistent services with care are available throughout

Guest Room Facilities and Services

24 hours.

- ♦ Free Wi-F
- ♦ i50" High Resolution LCD TV
- ♦ Sweet Morning Call
- ♦ Independent Air-conditioner
- ♦ Warm Air Ventilation System in Bathroom
- ♦ Safe for Valuable Belongings
- ♦ Fire-proof Detection Device
- ♦ Italian Imported Bathroom Commodities
- ♦ Shower Toilet

Room Rates for 2016

Standard Single	NT\$ 5,500
Standard Room	NT\$ 5,500
Standard Twin	NT\$ 5,500
Superior Room	NT\$ 6,000
Deluxe Room	NT\$ 7,000
Deluxe Twin	NT\$ 7,000
Deluxe Family	NT\$ 9,000
Family Room	NT\$ 10,000
Executive Suite	NT\$ 12,000
Chuhu Suite	NT\$ 16,000

* All room rates are calculated in the currency of NTD, and the rates are inclusive of 5% business tax; however, a 10% service fee will be charged additionally.

